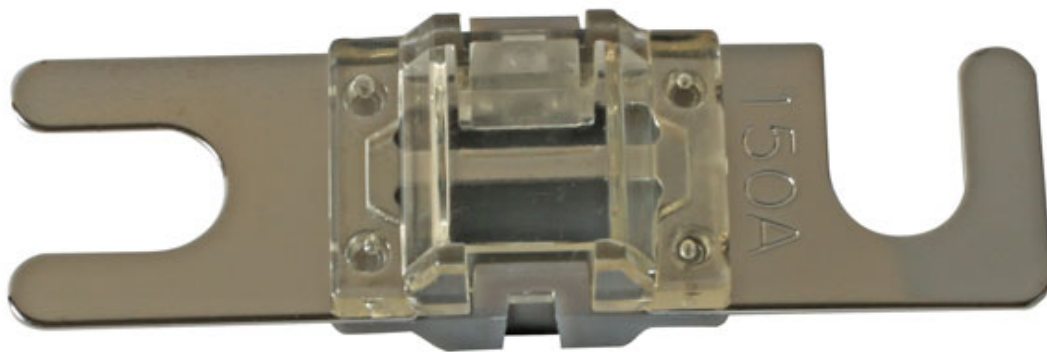


## Midi Fuses, Open Ended 150A 2pc

A pack of 150 amp open ended midi fuses. The opened ended design enables fuses to be easily changed without removing the fixing bolts, saving time.



### Additional Information

- 150 amp open ended midi fuses, with slotted fixing points for ease of use.
- Housing material: thermoplastic; metal: copper nickel plated.
- Voltage rating: 32V DC max.
- Conforms to SAE J1171 & ISO 8820-5.
- Included in assortment of open ended midi fuses, Part No. 37645.

<http://product/37654>

